

larson metals[®]

by Alucoil[®]

Composite Panels for Architectural Wall Cladding

larcore[®] A2 & elZinc[®]

by Alucoil[®]

Honeycomb Panels for Architectural Wall Cladding

METALS

Colour Chart

Transforms ideas into reality



Alucoil[®]

Grupo Alibérico

larson metals® & larcore® A2 & elZinc®

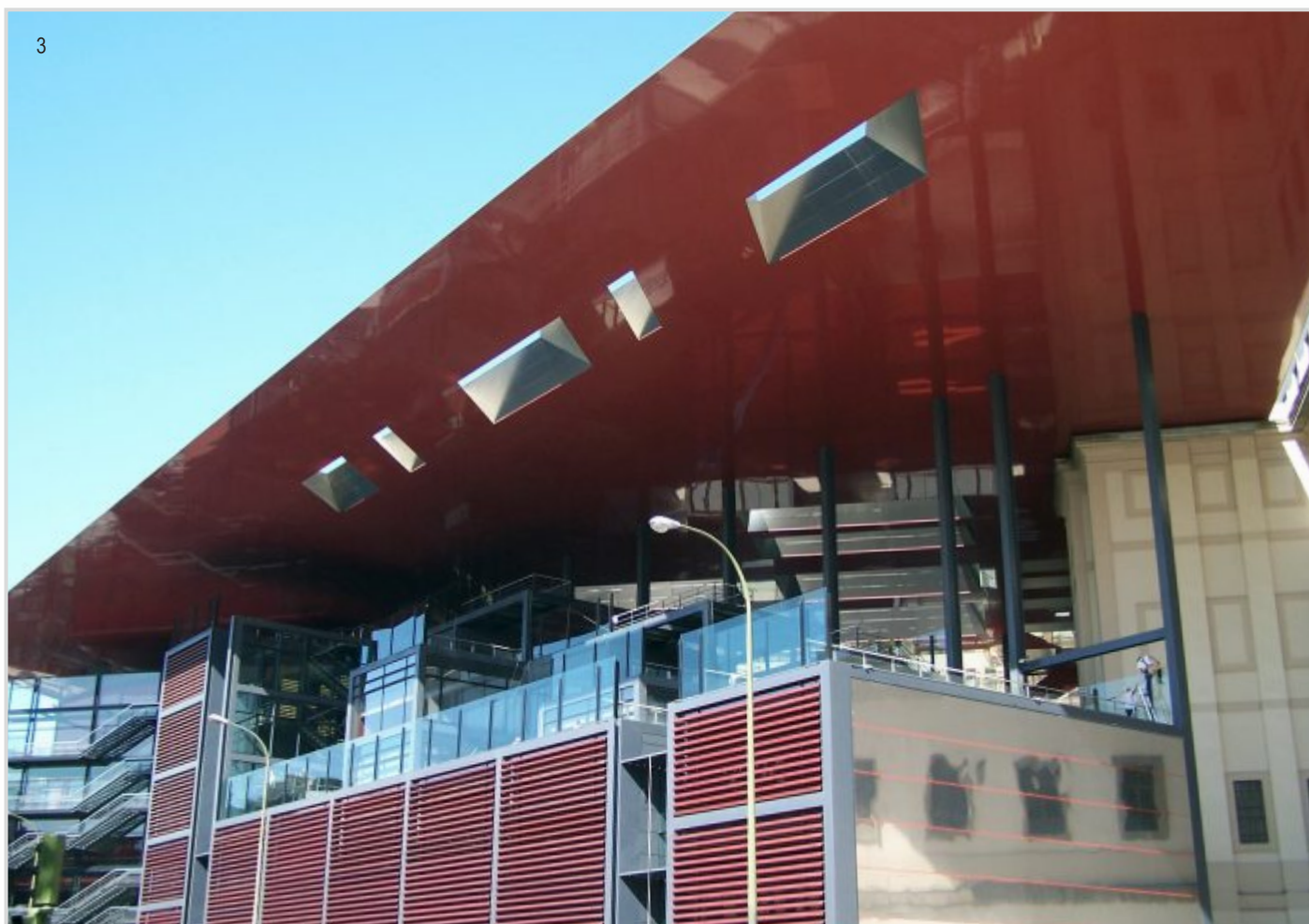


1

- 1. Maersk Headquarters (Panum, Copenhagen). COPPER
- 2. Iradier Arena (Vitoria, Spain). BRASS
- 3. Reina Sofia Museum (Madrid, Spain). STAINLESS STEEL



2



3

Noble metals such as **Stainless Steel, Copper, Brass and Zinc** are shown in their natural appearance. The lack of treatment makes these composites the ideal ecological solution and provides the sensation of liveliness from the distinctive nature's finest elements. Lightness and flatness **Alucoil's** panels.



larson metals* Zinc Blue
larcore* A2 & elZinc* Zinc Blue



larson metals* Zinc Ebano
larcore* A2 & elZinc* Zinc Ebano



larson metals* Zinc Brown
larcore* A2 & elZinc* Zinc Brown



larson metals* Zinc Green
larcore* A2 & elZinc* Zinc Green



larson metals* Zinc Red
larcore* A2 & elZinc* Zinc Red



larson metals* Zinc Gold
larcore* A2 & elZinc* Zinc Gold



larson metals* Stainless Steel 2D



larson metals* Zinc Slate
larcore* A2 & elZinc* Zinc Slate



larson metals* Brass



larson metals* Stainless Steel WF30 Brushed


Alucoil[®]
Grupo Alibérico



larson metals* Copper

**Specialists in the manufacture
of Advanced Materials for Architecture**

METALS
Colour Chart
Transforms ideas into reality

Polígono Industrial de Bayas C/ Ircio. Parcelas R72-77
09200 Miranda de Ebro, Burgos - SPAIN
Tel.: +34 947 333 320 Fax: +34 947 324 913
info@alucoil.com
www.alucoil.com